



Forge Close | Cannock | WS11 8JJ

£1,000 Per Month



## Summary

Webbs Estate Agents are delighted to bring to market this modern and well presented mid town house situated on a very popular development, just a short commute to Cannock town and within easy access of major road networks.

In brief, the accommodation comprise of; entrance hallway, guest WC, lounge, kitchen diner with French doors opening out onto the rear garden. To the first floor there are three bedrooms an en-suite shower room and family bathroom.

Externally the property has a landscaped enclosed rear garden with paved patio seating area, rear gated access leading to the driveway providing off road parking. The property further benefits from solar panelling.

## Key Features

## Rooms and Dimensions

### PROPERTY DETAILS

#### Entrance Hallway

9'2" x 3'4" (2.80 x 1.03)

#### Downstairs WC

4'8" x 2'9" (1.43 x 0.86)

#### Living Room

15'8" x 11'6" (4.79 x 3.53)

#### Kitchen Diner

8'9" x 14'10" (2.68 x 4.53)

#### Landing

4'7" x 5'11" (1.42 x 1.82)

#### Bedroom

7'6" x 11'0" (2.31 x 3.37)

#### En-Suite

6'10" x 3'4" (2.10 x 1.04)

#### Bedroom

7'6" x 8'7" (2.30 x 2.63)

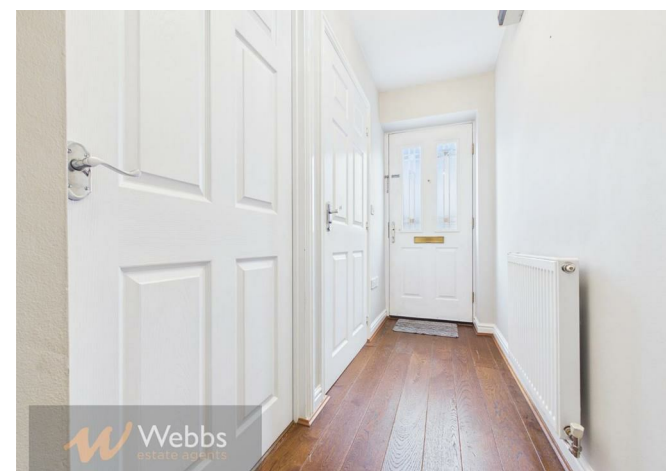
#### Bedroom

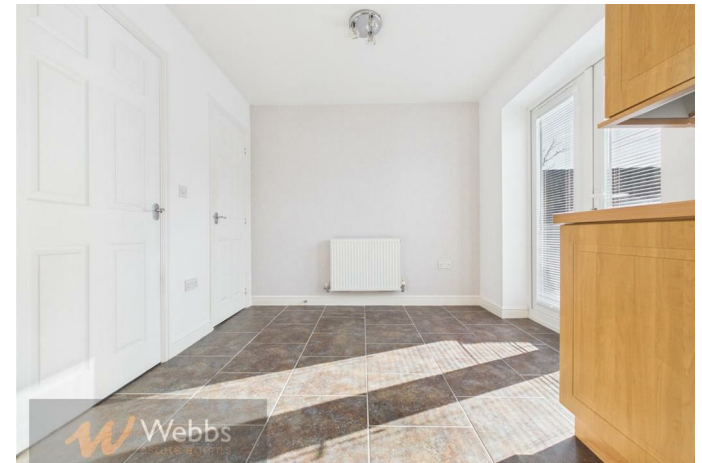
8'9" x 6'0" (2.69 x 1.84)

#### Bathroom

6'11" x 5'5" (2.11 x 1.67)

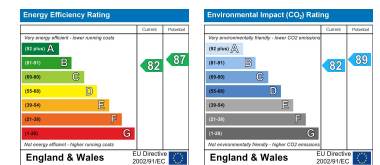
### TENANCY INFORMATION & IMPORTANT NOTES







Webbs Estate Agents - endeavour to maintain accurate depictions of properties in Virtual Tours, Floor Plans and descriptions, however, these are intended only as a guide and purchasers must satisfy themselves by personal inspection.



153 Avon Road, Cannock, WS11 1LF

Tel: 01543 468846 | Email: sales@webbsestateagents.co.uk | www.webbestateagents.co.uk

